

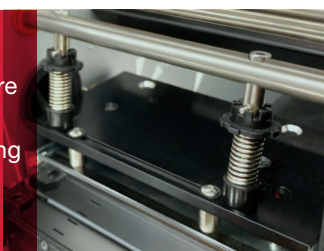
TX Series

INDUSTRIAL BARCODE LABEL PRINTER



RUGGED
PARTS
DURABLE
MACHINES
SURPASSING
PERFORMANCE

NEW TPH Pressure
Adjusting
exceptional printing
quality



FAST AND INTELLIGENT INDUSTRIAL-GRADE PRINTING SOLUTION

The original design of TX Series has been taken into account various elements that define an industrial printer: handling ability and memory, media compatibility and loading capacity, speed and performance, printing effect, interface and optional items.

The metal-framed composition of TX series carries all advanced techniques that function in actual performance, producing flash-speed, steady and reliable printing, remarkable print quality, smart and intelligent solution, and compatibility with popular printer control languages.

BENEFITS

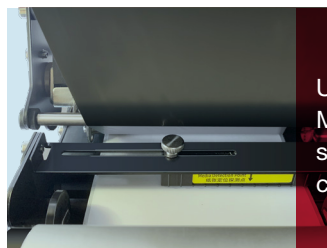
TX series can meet your printing needs of stability and reliability, as well as flash-speed and premium performance. The powerful CPU capacity and rugged parts work together to achieve the optimal outcome and significantly increased print efficiency.

TX Series can automatically detect and support popular printer control languages (e.g PPL-E, PPL-Z) to accommodate the ease of replacing other mainstream brand printers.

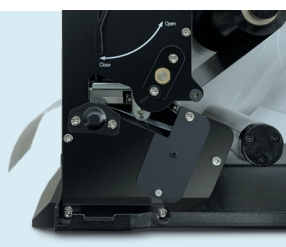
The carefully designed fully fixed all-metal frame is an innovation that combines stability and convenience. The ingenious side wall design is fused with the fully fixed structure, which not only facilitates the installation of consumables to the greatest extent, but also creates an extremely strong frame structure.

With the adoption of the innovatively designed printhead pressure adjustment kits, outstanding print quality can be assured by tool-free printhead pressure and balance adjustment. Meanwhile, equipped with industrial-grade precision design, TX series stands out for its ultra-precise label positioning, even when printing super small labels with the height of 5 mm.

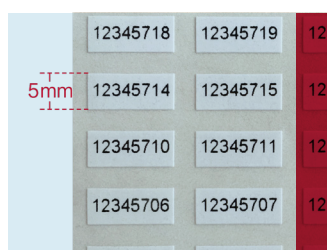
Up/Down Reflective
Media Sensor
super media
compatibility



Innovative
Sidewall Design
All-Metal Fixed Frame
Sturdy and Stable
Extremely Convenient
Consumable Installation



Super accurate
media detection
extra-small label
printing



SPECIFICATIONS

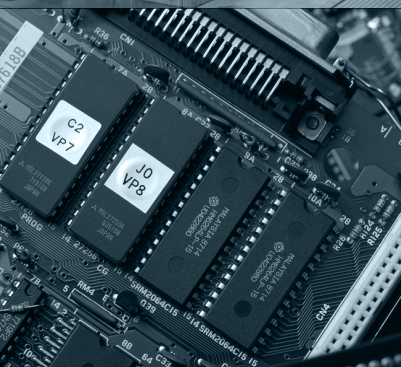
Model	TX2	TX3	TX6
Printing Mode	Direct Thermal and Thermal Transfer		
Printing Resolution	203 dpi	300 dpi	600 dpi
Max Printing Speed	10 ips (254 mm/s)	8 ips (203.2 mm/s)	4 ips (101.6 mm/s)
Max Printing Width	4.09" (104 mm)	4.17" (106 mm)	4.16" (105.6 mm)
Max Printing Length	157" (4000 mm)	79" (2000 mm)	19.6" (500 mm)
HEAT™ Level	I	I	I
Memory	64 MB FLASH ROM, 16 MB SDRAM		
Media	Width: 4.56" (116 mm) max., 0.39" (10 mm) min. OD: 7.3" (186 mm) max., ID: 3" (76.2mm) min, as standard; 1.5" (38 mm) min, is factory dependent		
Media Thickness	0.0024" ~ 0.012" (0.06 mm ~ 0.305 mm), including liner		
Ribbon	Width: 4.65" (118 mm) max.; length: 1968' (600 m) max. OD: 3.3" (84 mm) max., ID: 1" (25.4 mm) min.; Ink side: both In and Out.		
Media Sensor	Upper Reflective (Adjustable), Lower Reflective (Adjustable) and Transmissive (Adjustable)		
Fonts	Five built-in dot matrix ASCII fonts, user-downloadable TrueType Fonts		
Barcode Types	1D Barcode: Code 39, Code 93, Code 128/subset A, B, C, Codabar, Interleave 2 of 5, UPC A/E 2 and 5 add-on, EAN-13/8/128, UCC-128, etc. 2D Barcode: MaxiCode, PDF417, Data Matrix, QR Code, CS Code, etc.		
Interfaces	RS-232 Serial, 10/100 M Adaptive Ethernet, USB DEVICE 2.0, USB HOST, Centronics Parallel		
LCD Display	Graphic Dot Matrix		
Power Source	100 ~ 240 V, 50/60 Hz		
Weight	33.06 lbs (15 kgs)		
Dimensions	W 11.3" (286 mm) x D 17.6" (448 mm) x H 10.7" (271 mm)		
Operating Environment	Temperature: 32°F ~ +104°F (0°C ~ 40°C) Relative humidity: 5% ~ 85% non condensing		
Storage Environment	Temperature: -40°F ~ +140°F (-40°C ~ 60°C) Relative humidity: 5% ~ 85% non condensing		
Optional Items	Rotary Cutter, External Label Rewinder		

* HEAT™, Heating Equilibrium Adaptive Tuning, newly developed by POSTEK, is a cutting edge technology in heating control of thermal print-heads. With HEAT™, the POSTEK printers can significantly improve their performance in the aspects of printout clarity and print speed. The HEAT™ level represents the fineness of the heating uniformity with level I being the finest.

* All specifications are subject to change without notice.

APPLICATIONS

Industrial Machinery
Electronics
...



SAMPLES

MODEL	EC5805	CDLOR	BLACK
MEID	A000001AD83039		
RSN	R9HWCD03210016470		
S/N	EV2AB10E71600042		
SKU	CDHW05Z1		

100000120	100000121
100000122	100000123
100000124	100000125

A-B 2Y	12345678
A-B 2Y	12345679
A-B 2Y	12345680
A-B 2Y	12345681
A-B 2Y	12345682

POSTEK

POSTEK ELECTRONICS CO., LTD.

Wisdom Plaza, Block B, Tower 2, 18th Floor
Qiaoxiang Road, Nanshan District, Shen Zhen,
Guang Dong, China

T +86-755-83240988
F +86-755-83202898

WWW.POSTEKCHINA.COM