



# Genesis™ XP 7680GSR

---

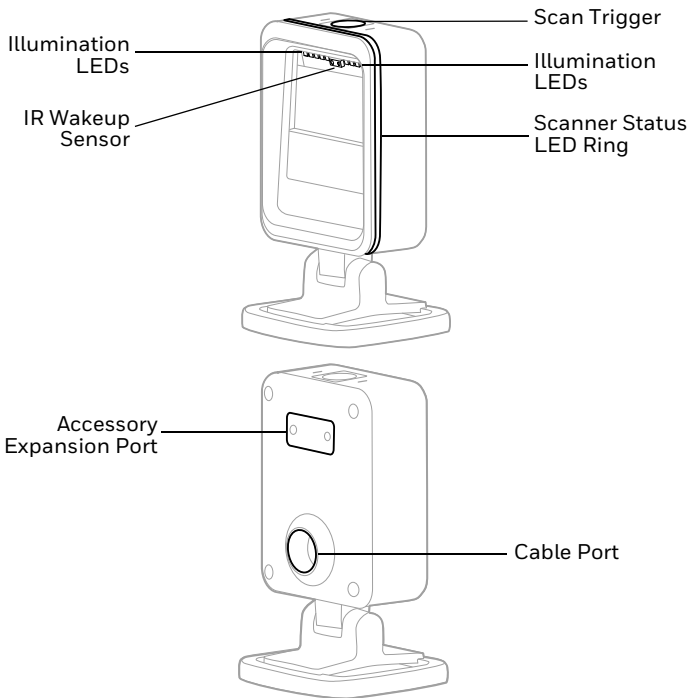
Presentation Area Imager

## Quick Start Guide

Agency Model: 7680GSR

**Note:** Refer to your User Guide for information about cleaning your device.

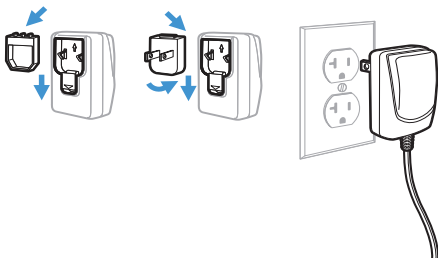
## Scanner Features



## Get Started

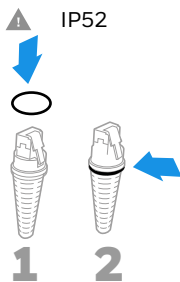
Turn off the computer's power before connecting the scanner, then power up the computer once the scanner is fully connected.

### Power Supply Assembly (if included)

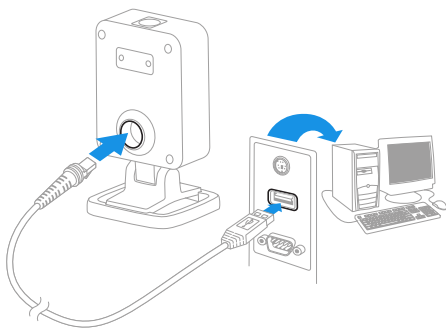


**Note:** *The power supply must be ordered separately, if needed.*

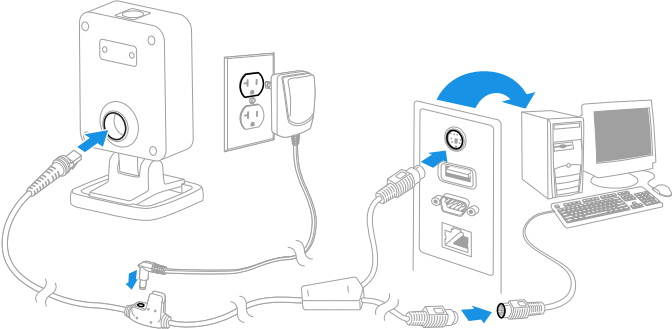
## Connect the Scanner



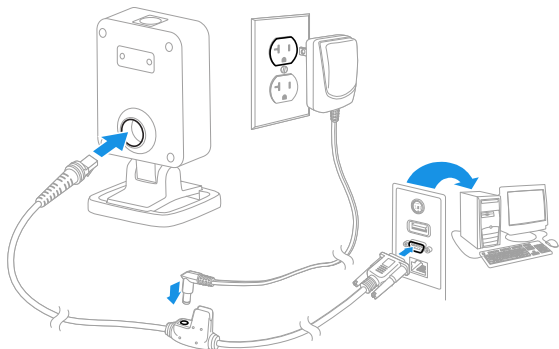
**USB:**



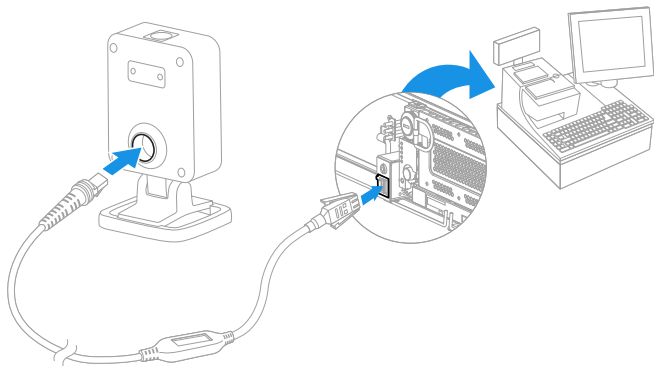
# Keyboard Wedge:



## RS232 Serial Port:



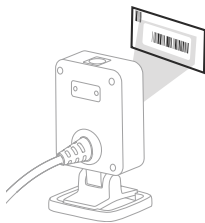
## RS485:



## Reading Techniques

Present the barcode to the scanner. The illumination LEDs turn on.

Optional: For aiming assistance, press and hold the scan trigger and center the aiming dot on the barcode.



## Troubleshooting

- If the light level in the room is not high enough, the barcode may not be read.
- If the barcode is highly reflective (e.g., laminated), you may need to tilt the scanner at an angle so the barcode can be scanned.

## Scanner Status LED Ring

The Genesis XP 7680 has a 360 degree LED ring that surrounds the scan region and provides feedback about the scanner status:

LED	Status
White	Idle: The Genesis XP is ready to scan and does not identify anything in the scan field.
Green	Good read
Red	Error

## Standard Product Defaults

The following barcode resets all standard product default settings.



Standard Product Defaults

## USB Serial

Scan the following code to program the scanner to emulate a regular RS232-based COM Port. If you are using a Microsoft® Windows® PC, you will need to download a driver from the Honeywell website ([www.honeywellaidc.com](http://www.honeywellaidc.com)). The driver will use the next available COM Port number. Apple® Macintosh computers recognize the scanner as a USB CDC class device and automatically use a class driver.



USB Serial

**Note:** *No extra configuration (e.g., baud rate) is necessary.*

## USB PC Keyboard

Scan the following code to program the scanner for a USB PC Keyboard.



USB PC Keyboard



## RS485 Interface

The RS485 interface defaults to port 5B. If you have an IBM POS terminal using port 9B, scan the appropriate code below to program the terminal, then power cycle the cash register.



IBM Port 9B HHBCR-1  
Interface



IBM Port 9B HHBCR-2  
Interface

**Note:** For additional RS485 interface selections, see the *User Guide* for your product.

## Keyboard Country

Scan the appropriate country code below to program the keyboard layout for your country or language. By default, national character replacements are used for the following characters: # \$ @ [ \ ] ^ ' { } ~ Refer to the ISO 646 Character Replacements chart in your User Guide to view the character replacements for each country.



USA (Default)



Belgium



Denmark



Finland



France



Germany/Austria



Great Britain



Italy



Norway



Spain



Switzerland

**Note:** For a complete list of country codes, see the User Guide for your product.

## Object Detection

Object Detection Mode uses an infrared (IR) beam to detect when an object is in the scanner's field of view. When an object is detected, the scanner attempts to scan the barcode. Scan **Object Detection Mode** then the **Short Range** code for a target that's approximately 6 inches (15cm) away. Or, scan **Object Detection Mode** then the **Mid Range** code for a target that's approximately 9 inches (23cm) away.



Object Detection Mode



Object Detection - Short Range  
(Default)



Object Detection - Mid Range

## Manual Trigger

Scan the **Manual Trigger - Normal** code to require that the scan trigger be pressed to read.



Manual Trigger - Normal

## Suffix

If you want a carriage return after the barcode, scan the **Add CR Suffix** barcode. To add a tab after the barcode, scan the **Add Tab Suffix** barcode. Otherwise, scan the **Remove Suffix** barcode to remove the suffixes.



Add CR Suffix



Add Tab Suffix



Remove Suffix

## Add Code ID Prefix to all Symbologies

Scan the following barcode if you wish to add a Code ID prefix to all symbologies at once.



Add Code ID Prefix To All Symbologies  
(Temporary)

*Note: For a complete list of Code IDs, see the User Guide for your product.*

## Function Code Transmit

When this selection is enabled and function codes are contained within the scanned data, the scanner transmits the function code to the terminal. Charts of these function codes are provided in your User Guide. When the scanner is in keyboard wedge mode, the scan code is converted to a key code before it is transmitted.



Enable  
(Default)



Disable

## EZConfig-Scanning

To access additional features for the scanner, use EZConfig-Scanning, an online configuration software tool, available from our website.

## Support

To search our knowledge base for a solution or to log into the Technical Support portal and report a problem, go to [www.honeywellaidc.com/working-with-us/contact-technical-support](http://www.honeywellaidc.com/working-with-us/contact-technical-support).

## Product Documentation

Product documentation is available at [www.honeywellaidc.com](http://www.honeywellaidc.com).

## Limited Warranty

For warranty information, go to [www.honeywellaidc.com](http://www.honeywellaidc.com) and click **Resources > Product Warranty**.

## Patents

For patent information, see [www.hsmpats.com](http://www.hsmpats.com).

## Disclaimer

Honeywell International Inc. (“HII”) reserves the right to make changes in specifications and other information contained in this document without prior notice, and the reader should in all cases consult HII to determine whether any such changes have been made. The information in this publication does not represent a commitment on the part of HII.

HII shall not be liable for technical or editorial errors or omissions contained herein; nor for incidental or consequential damages resulting from the furnishing, performance, or use of this material. HII disclaims all responsibility for the selection and use of software and/or hardware to achieve intended results.

This document contains proprietary information that is protected by copyright. All rights are reserved. No part of this document may be photocopied, reproduced, or translated into another language without the prior written consent of HII.

Copyright © 2021 Honeywell International Inc. All rights reserved.